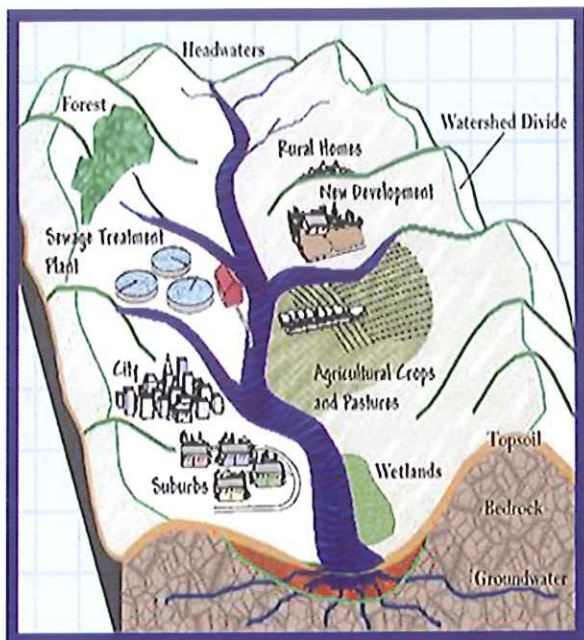


## What is a Watershed?

A watershed is all the land that drains to the same river or lake. Water travels from the highest points at the watershed edge to the lowest point at the bottom of the watershed. Wherever you are, you are in a watershed!

When it rains, some water travels over the land surface to the nearest stream or creek. This water is called surface runoff or stormwater. As the stormwater flows, it picks up any contaminants lying on the surface – pesticides and fertilizer from lawns, manure from farms, sediment from construction sites, and oil and gas from roads. Small streams join to form larger and larger rivers, until the water – and any contaminants it is carrying – reaches the final lake or river.

Some precipitation, instead of traveling over the land, will percolate into the soil and reach the groundwater. Similarly, the groundwater may pick up nitrates from failing septic systems, gasoline from leaky storage tanks, and industrial chemicals from improper dumping. The groundwater ultimately flows into one of the rivers or lakes in the watershed.



## Ways to Help

### What can you do?

- Dispose of motor oil at a garage that will recycle it. Never pour oil on the ground or in a storm drain or sewer on the street.
- Pump out your septic system every two or three years. Look under "Septic Tanks" in the Yellow Pages to find a contractor.
- Bring household hazardous waste – such as paint, varnishes, and other chemicals – to a county waste collection site. Call ahead or check the county website for dates.
- Minimize the use of pesticides and herbicides on your lawn and garden.
- If you drill a new well, make sure the old one is properly closed and abandoned.
- Do not dump swimming pool water into a creek or storm drain at the end of the season. If possible, direct the water into the sanitary sewer. Otherwise, wait until the chlorine diminishes and then direct pool water onto grass, forest, or other natural area.
- Remember: anything you throw or store on the ground can find its way into the water supply. Store and handle chemicals properly.
- Call the Department of Environmental Protection office at **866-825-0208** immediately if you observe a chemical spill.

### For more information

Adams County Medicine Take-Back:  
<https://www.cfygettysburg.com/medicine-take-back>

Pennsylvania DEP: [www.dep.pa.gov](http://www.dep.pa.gov)

Source Water Protection:  
<https://www.epa.gov/sourcewaterprotection>

Center for Watershed Protection: [www.cwp.org](http://www.cwp.org)

Source Water Collaborative: [www.sourcewatercollaborative.org](http://www.sourcewatercollaborative.org)

PA Source Water Protection: [www.sourcewaterpa.org](http://www.sourcewaterpa.org)

## CITIZEN'S GUIDE

### Protecting Your Drinking Water



### Gettysburg Municipal Authority Source Water Protection Program

This brochure is funded by the PA Department of Environmental Protection's Source Water Protection Technical Assistance Program.

#### For more information:

Gettysburg Municipal Authority  
601 East Middle Street  
Gettysburg, PA 17325  
717-334-6738  
[www.gettysburgma.com](http://www.gettysburgma.com)



## A Message from the Gettysburg Municipal Authority

Everyone uses local water sources every day, but do you know where your water really comes from?

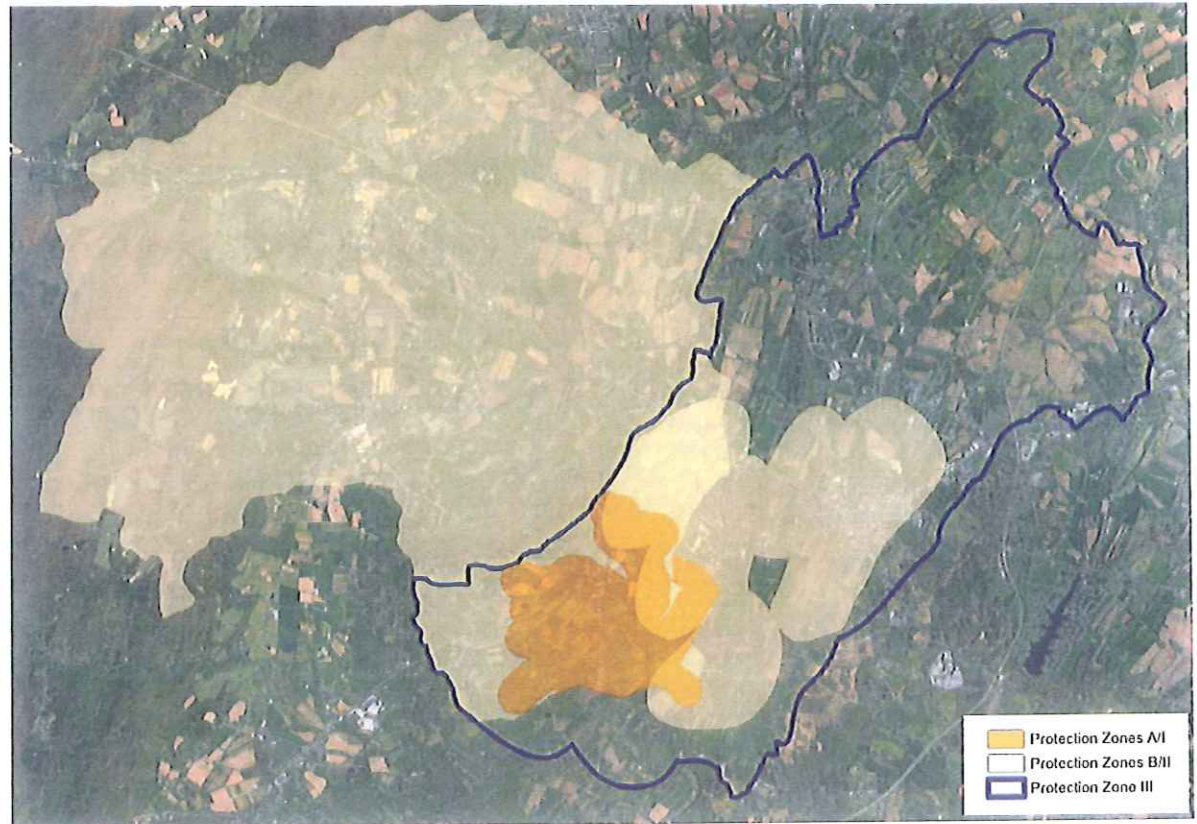
The staff at GMA work around the clock to provide top quality water to every tap. They work hard to protect your water resources, which are the heart of your community, your way of life and your children's future. To maintain a clean, dependable water supply, they need your help!

This brochure was developed to make your community aware of the importance of protecting your water supply. Once a water source becomes contaminated, the cleanup often takes many years and can be very expensive. It is in our community's best interest to take the proper precautions to prevent contaminants from entering our water supply.

Who is responsible for protecting your drinking water? EVERYONE!

If you have any questions about source water protection in your area, please contact the GMA office at (717) 334-6738 for more information.

## Gettysburg Municipal Authority - Source Water Protection Zones



**The Gettysburg Municipal Authority obtains your drinking water from several groundwater wells and Marsh Creek.** In the figure above, water has the potential to reach GMA water sources in as little time as 5 hours in Protection Zones A/I, and up to 10 years in the outer parts of Protection Zones B/II. Protection Zone III can contribute groundwater to the wells owned by GMA. Source water protection can help prevent your drinking water from becoming polluted by managing possible sources of contamination in these protection zones. Everyone has an important part to play in protecting drinking water – today and for the future. Source water protection is a community effort - we hope you read this and help protect our water supply.

**Why do water sources sometimes become polluted?** A water supply can become polluted when substances that are harmful to human health enter the groundwater or surface water. Common pollutants include gasoline or oil from leaking tanks, nitrate and pesticides from agriculture and lawns, pathogens from wastewater, livestock and pet waste, and salt from winter road maintenance. Once drinking water is contaminated, it must be treated or abandoned as a drinking water source. The high costs of treating polluted water or finding a new source of drinking water can be avoided through source water protection.





## A Message from the Gettysburg Municipal Authority

Everyone uses local water sources every day, but do you know where your water really comes from?

The staff at GMA work around the clock to provide top quality water to every tap. They work hard to protect your water resources, which are the heart of your community, your way of life and your children's future. To maintain a clean, dependable water supply, they need your help!

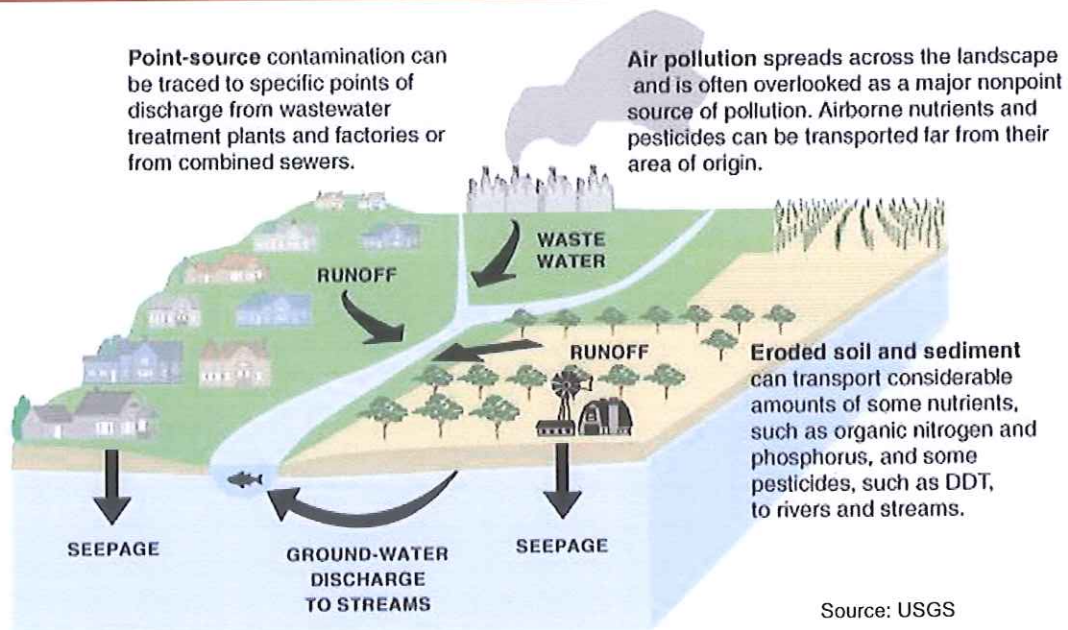
This brochure was developed to make your community aware of the importance of protecting your water supply. Once a water source becomes contaminated, the cleanup often takes many years and can be very expensive. It is in our community's best interest to take the proper precautions to prevent contaminants from entering our water supply.

Who is responsible for protecting your drinking water? **EVERYONE!**

If you have any questions about source water protection in your area, please contact the GMA office at (717) 334-6738 for more information.



## Examples of Source Water Contamination



**The Gettysburg Municipal Authority obtains your drinking water from several groundwater wells and a creek.** Source water protection can help prevent your drinking water from becoming polluted by managing possible sources of contamination in the watershed. Everyone has an important part to play in protecting drinking water – today and for the future. Source water protection is a community effort – we hope you will read this and other information forwarded to you, and help protect our water supply.



**Why do water sources sometimes become polluted?** A water supply can become polluted when substances that are harmful to human health enter the groundwater, rivers, reservoir, or springs. Common pollutants include gasoline or oil from leaking tanks, nitrate and pesticides from agriculture and lawns, pathogens from livestock and pet waste, salt from winter road maintenance, and chemicals from industrial facilities. Once drinking water is contaminated, it must be treated or abandoned as a drinking water source. The expense of treating polluted water or finding a new source of drinking water can be avoided through source water protection.



## What is Source Water Protection?

The goal of source water protection is preventing contaminants from entering waterways that serve as our drinking water sources. Protecting our source water from pollutants not only protects our drinking water supplies, but it also makes economic sense, as it can be extremely costly to remove pollutants from drinking water sources through complex treatments. Protecting our source water also helps protect the natural environment by providing a healthy habitat for countless species.

The source water for Gettysburg Municipal Authority customers is from an intake in the Marsh Creek and supplemental groundwater wells. To further strengthen our source water protection efforts, GMA has volunteered to participate in the Pennsylvania Department of Environmental Protection's **Source Water Protection Technical Assistance Program (SWPTAP)**.

Through SWPTAP, a source water protection plan will be developed for the water system. The plan will guide GMA's source water protection efforts in the future. Once the plan is complete, it will be available for review, so that all customers can learn how they can help assist our source water protection efforts.

## More Ways to Help

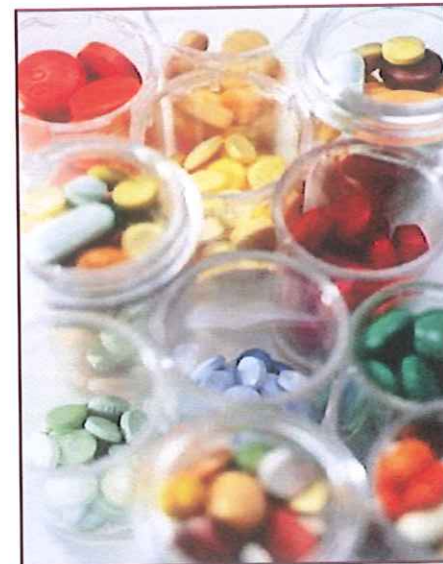
The members of the Gettysburg Municipal Authority are working nonstop to provide our customers with a clean and reliable source of drinking water, and we could use your help!

### *Steps to help us protect our water supplies*

- Minimize the use of pesticides and herbicides on your lawn and garden.
- Do not dump swimming pool water into a creek or storm drain at the end of the season. If possible, direct the water into the sanitary sewer. Otherwise, wait until the chlorine diminishes and then direct water into grass, forest, or other natural areas.
- Remember: Anything you throw or store on the ground can find its way into waterways. Anything you flush down the toilet or rinse down a sink will end up in a waterway. Store, handle and dispose of all chemicals properly.
- Bring household hazardous waste – such as paint, varnishes, and other chemicals to recycling facilities. Check your County website for details of any collection events. Dispose of motor oil at a garage that will recycle it. Never pour oil on the ground or in a storm drain or sewer on the street.
- Call the PA Department of Environmental Protection at 866-825-0208 immediately if you observe a chemical spill.

## CITIZEN'S GUIDE

### Proper Disposal of Pharmaceuticals



#### Gettysburg Municipal Authority Source Water Protection Program

This program is funded by the PA Department of Environmental Protection's Source Water Protection Technical Assistance Program

#### For more information:

Gettysburg Municipal Authority  
601 East Middle Street  
Gettysburg, PA 17325  
717-334-6738  
[www.gettysburgma.com](http://www.gettysburgma.com)



## A Message from the Gettysburg Municipal Authority



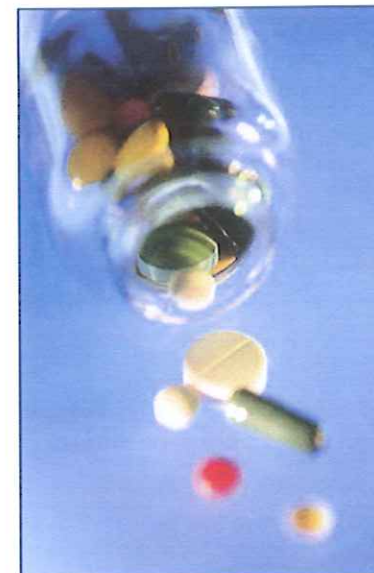
Your drinking water providers work around the clock to provide top quality water to every tap. It is a task that all water systems take very seriously. They work hard to protect our water resources, which are the heart of our community, our way of life and our children's future.

Pharmaceuticals can impact the quality of your drinking water. It can be very difficult to remove even trace amounts of pharmaceuticals from groundwater or surface sources. To maintain a clean, dependable water supply, your water system needs your help. This brochure was developed to make the community aware of the importance of proper disposal of prescription medications.

Please read this brochure carefully. If you have any additional questions, please refer to the guidelines cited in this brochure or contact the Adams County Office of Planning and Development for more information on collection events and drop-off boxes in your neighborhood.

## Proper Disposal of Pharmaceuticals

- A few small steps can make a huge impact in safeguarding the environment and improving water quality.
- Do not flush unwanted or leftover medications down the toilet or sink drain. They may affect groundwater and private drinking water wells.
- Never give your unwanted medicine to someone else. Having unwanted medications around the home presents a danger to children, guests, and pets that could accidentally ingest them.
- Plan a community pharmaceutical take-back programs available in your area that allow the public to bring unused drugs to various locations for proper disposal. Visit the website below for additional information on collection events and dropoff points in your neighborhood.



For more information on the proper disposal of pharmaceuticals:

**Adams County Medication Drop-Boxes**

<http://www.adamscounty.us/Dept/Planning/Documents/RecyclingBrochure.pdf>

**National Take-Back Initiative**

[http://www.deadiversion.usdoj.gov/drug\\_disposal/takeback/](http://www.deadiversion.usdoj.gov/drug_disposal/takeback/)

**The Office of National Drug Control Website** <http://www.whitehouse.gov/ondcp>

**The Smarxt Disposal Campaign**

<https://www.justice.gov/sites/default/files/usao-ndga/legacy/2011/03/02/SMARxT%20Disposal%20Poster.pdf>